

OUR MANUFACTURING EQUIPMENT

The Technology To Get The Job Done Right

Multiple-Spindle Bar Machines (31)
from 7/16" round min. to 4-1/8" round max.

CNC Multiple-Spindle Bar Machines (3)
to 1-1/4" round max.

Single-Spindle Screw Machines (19)
5/16" to 1-5/8" max.

CNC Single-Spindle Screw Machine
to 22mm (.866") round max.

Twelve-Station Rotary Transfer Machines (9)
to 1-1/2" hex and 1-3/4" round max.

Ten-Station Rotary Transfer Machine
to 3/4" round max.

2-Axis CNC Turning Centers (10)
to 2-1/2" round max. – 10" max. diameter

CNC Turning Centers (6)
multi-axis with sub-spindle

Chuckers (3)

CNC Vertical Machining Centers (3)

CNC Sliding Headstock (7)
to 1-1/4" round max.

Horizontal Mills (3)

Horizontal Gear Hobbers (19)

Grinders (4)
O.D., Surface, Double Disc, Centerless

Six-Station Parts Former
to 1-1/4" max. diameter

2-Die, 3-Blow Cold Header
to 9/16" max. diameter

#20 Incline Threader

#40 Incline Threader

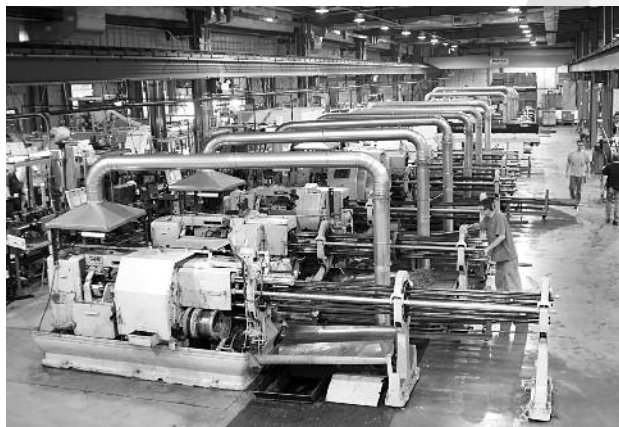
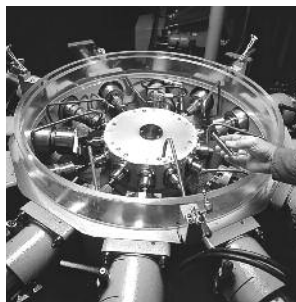
Tapper

Self-Feeding Production Saw

Semi-Automatic Mig Welding Station

36" Vertical Broach Machine

**Various Custom Chamfering and other
Secondary Machines**



You can trust **Seward Screw Products** to possess the latest and most advanced technology to manufacture the custom parts you require, across a wide variety of diameters, lengths, tolerances, shape complexities, and materials. Further, we continually expand and upgrade our manufacturing equipment and capabilities to adapt to the growing needs our customers. This diversity of capability allows us more than one way to make a part. For example, when a part moves to higher volume levels, and a longer design life, Seward's coldforming capabilities can deliver cost-saving advantages.



Seward Screw Products Inc.
16377 Third Street
PO Box 86
Seward, Illinois 61077-0086
Tel 800.624.5159
Fax 815.247.8891
sales@sewardscrew.com
www.sewardscrew.com